

MONTHLY MEMBERSHIP PROGRESS REPORT

LOCATION REP OF SRI LANKA

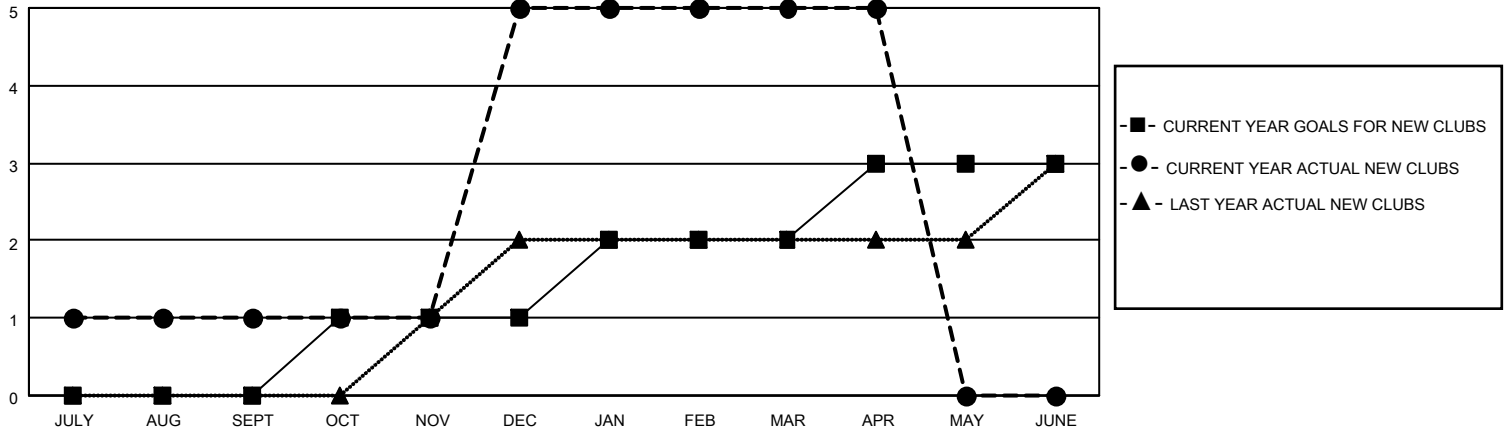
District 306 A2

Results as of: 4/30/2021

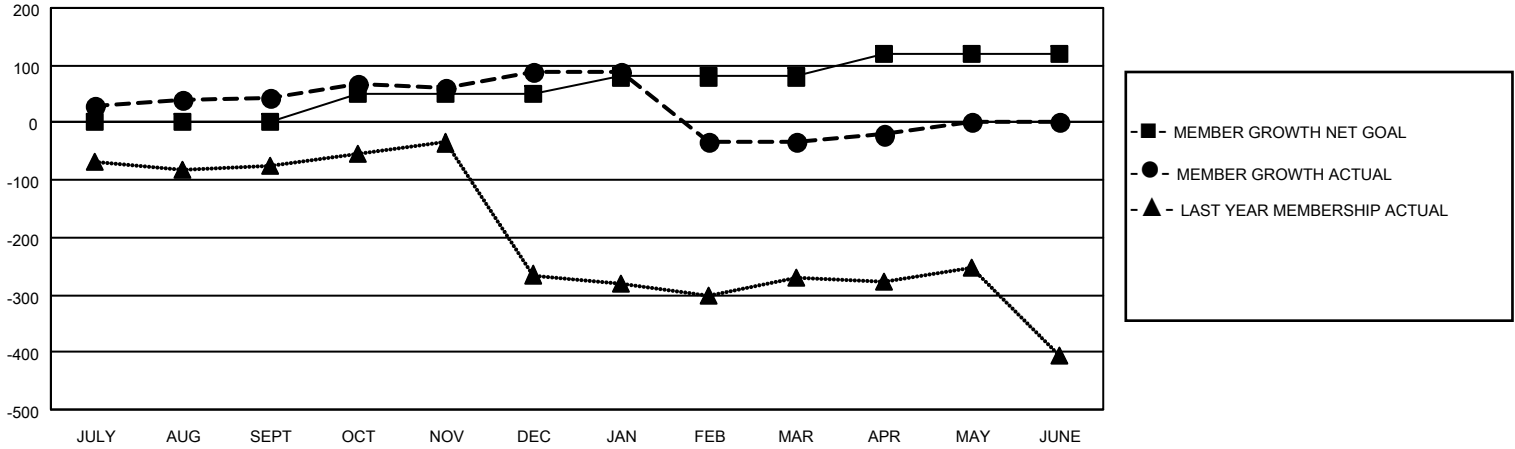
Clubs			
RESULTS FOR 2020-2021			
QUARTER	NEW CLUB GOAL	NEW CLUBS	DROPPED CLUBS
JULY/AUG/SEPT	0	1	0
OCT/NOV/DEC	1	4	0
JAN/FEB/MAR	1	0	11
APR/MAY/JUNE	1	0	0

Members			
RESULTS FOR 2020-2021			
QUARTER	MEMBER GROWTH NET GOAL	MEMBER GROWTH ACTUAL	DROPPED MEMBERS ACTUAL (including transfers)
JULY/AUG/SEPT	0	113	60
OCT/NOV/DEC	50	211	155
JAN/FEB/MAR	30	24	138
APR/MAY/JUNE	40	13	1

GOALS AND ACTUAL NEW CLUBS CUMULATIVE



GOALS AND ACTUAL MEMBERS CUMULATIVE



DROPPED CLUBS: 11

61 CLUBS OF 104 ADDED 1 OR MORE NEW MEMBERS

<u>GENDER DISTRIBUTION</u>	
MALE	1,751 (76.06%)
FEMALE	551 (23.94%)

<u>DROPPED MEMBERS</u>	
DECEASED	5
CLUB CANCELLED	124
OTHER	225
TOTAL	354

[CLICK HERE FOR CUMULATIVE MEMBERSHIP DATA](#)

TOTAL FAMILY UNIT MEMBERS	925
FAMILY MEMBERS PAYING HALF DUES	513